

An open book of Gregorian chant notation is shown, with two pages visible. The pages contain Latin text and musical notation. In front of the book, there are several stylized human figures, representing a group of people. The figures are simple, grey, 3D-like shapes with circular heads and rectangular bodies. The overall image is in grayscale.

GREGORIAANSE KRING HELMOND

Gezangen 18 juni 2023

Ant.
5.

S

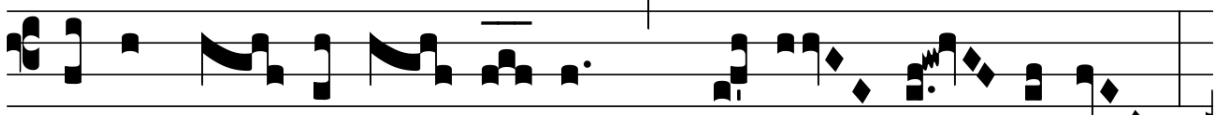
Alve Re-gí-na, * Ma-ter mi-se-ri-córdi-ae: Vi-ta, dul-
cé-do, et spes nostra, salve. Ad te clamá-mus, éxsu-les,
fí-li- i Hevae. Ad te suspi-rá-mus, geméntes et flentes
in hac lacrimá-rum valle. E-ia ergo, Advo-cá-ta nostra,
il-los tu-os mi-se-ri-córdes ócu-los ad nos convérte, Et
Je-sum, bene-díctum fructum ventris tu-i, no-bis post hoc
exsí-li- um osténde. O cle-mens, O pi- a, O
dulcis Virgo Ma-rí- a.

Intr.
2.

D



Ó-minus * for-ti-túdo ple-bis su- ae, et pro-



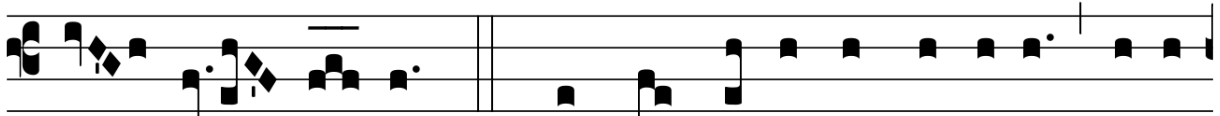
téctor sa- lu-tá- ri- um Chri-sti su- i est :



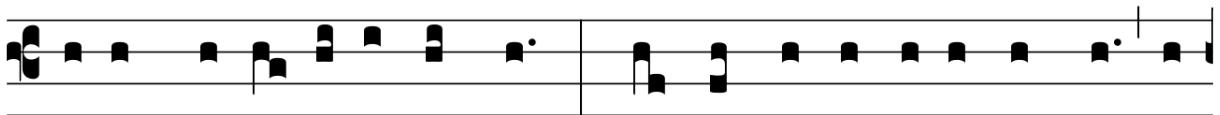
sal-vum fac pópu-lum tu- um, Dómi- ne, et béne-



dic he- re-di- tá-ti tu- ae, et rege e-os usque



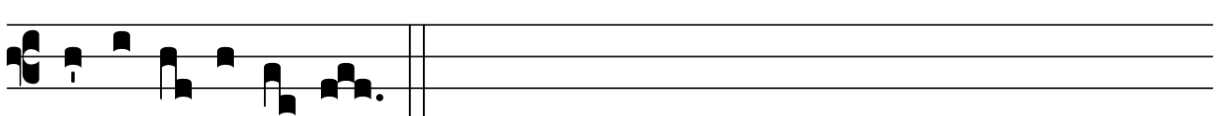
in saé- cu- lum. *Ps.* Ad te Dómi-ne clamábo, De- us



me- us ne sí- le- as a me : * nequándo tá- ce- as a me, et



assimi-lábor descendé-nti-bus in la-cum. Gló-ri- a Patri.



E u o u a e.

Grad.
5.

V Ení- te fí- li- i, * audí- te me : timó-
rem Dómi- ni do- cébo vos. ¶. Accé- di-
te ad e- um,
et illumi- ná- mi- ni : et fá- ci- es vestrae * non con-
fundéntur.

3.

A

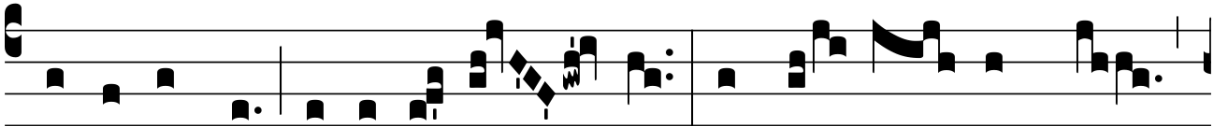
L-le-lú- ia. * *ij.*



Ψ. In te Dó-mi- ne spe- rá- vi, non confún-



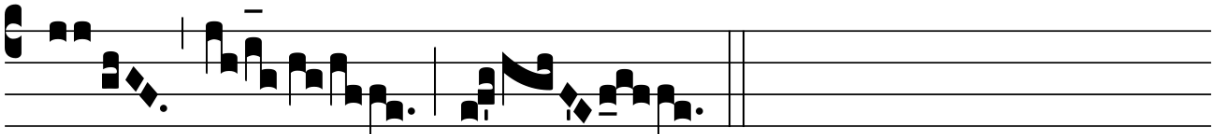
dar in ae- tér- num: in tu- a ju- stí- ti- a



lí-be-ra me, et é-ri-pe me: inclí- na ad me



au-rem tu- am, accé- le- ra * ut e- rí- pi- as



me.

Offert.

5.

P

O- pu- lum hú- mi- lem * sal- vum fá- ci-

es, Dó- mi- ne, et ó- cu- los superbó- rum

humi- li- á- bis : quóni- am quis De- us

praeter te, Dó-

mi- ne?

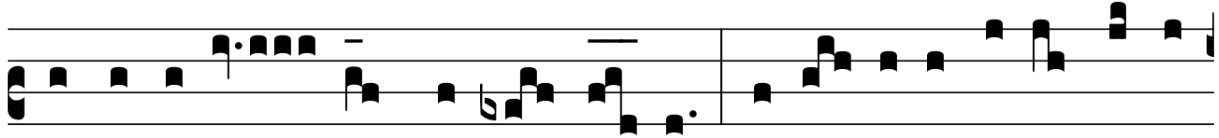
Comm.

1.

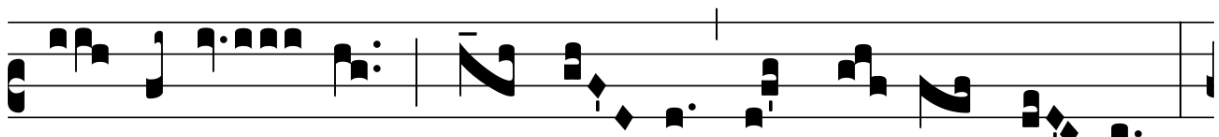
P



Asser * invé-nit si-bi domum, et turtur ni-dum,



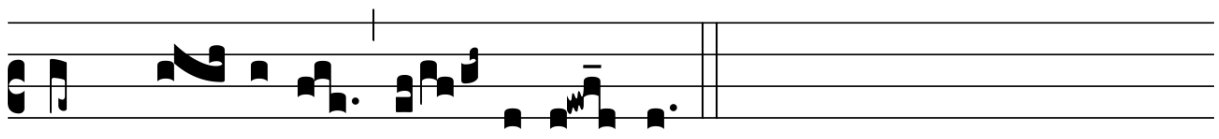
u-bi repó- nat pul-los su- os: altá- ri- a tu- a Dómi-



ne virtú- tum, Rex me- us, et De- us me- us:



be- á-ti qui há-bi-tant in domo tu- a, in saé- cu-



lum saé- cu-li lau- dábunt te.

